

MAIN FLOOR PLAN 3787 sq.ft.

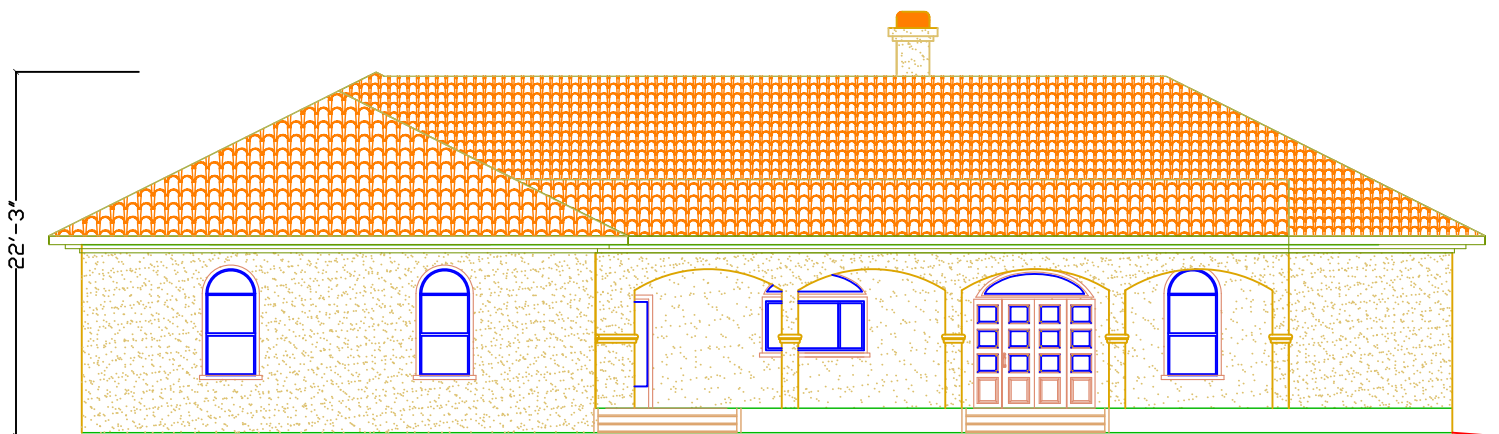
SHEET
1 of 2
PLAN
35



GREEN SENSE BUILDER, INC.
101 W. McKnight Way Suite B4
Grass Valley, CA 95949
Tel: 530-477-1504

P3787-B5
Live Oak

© Copyright 2011



Front Elevation

SHEET
2 of 2
PLAN
35



GREEN SENSE BUILDER, INC.
101 W. McKnight Way Suite B4
Grass Valley, CA 95949
Tel: 530-477-1504

P3787-B5
Live Oak

© Copyright 2011